



# Profiled window

## Assembly instructions

Solatube gutter piece  
350 mm/530 mm





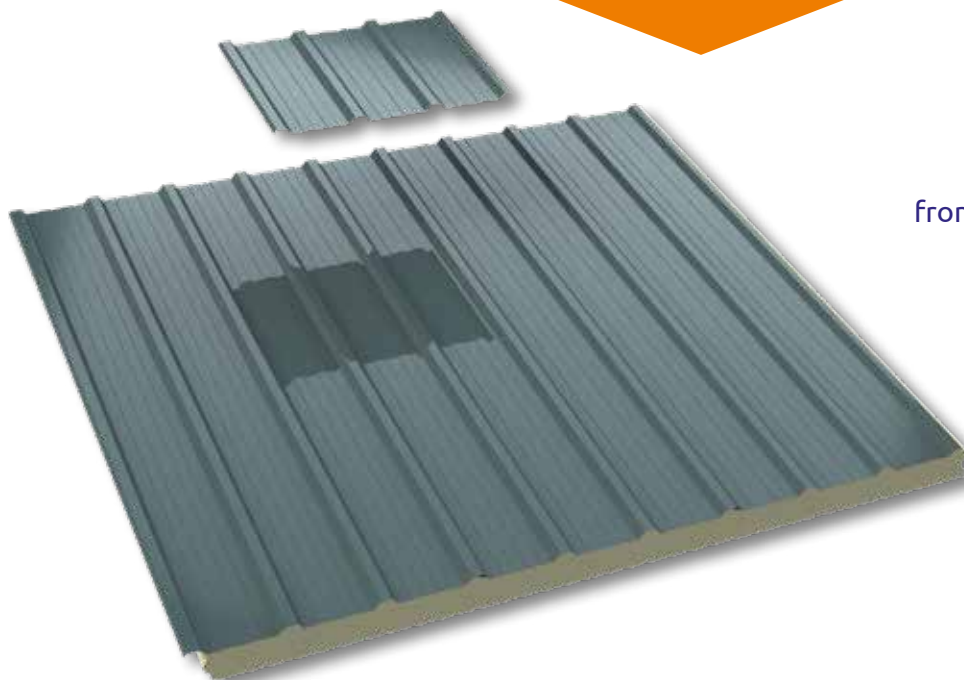
**Profiled**  
**window**

## Assembly instructions

### STEP 1

*In the next 7 steps, Profiled Window shows how to easily install the round Solatube 350 mm/530 mm, using 2 different options. The gutter pieces are available for every type of sandwich panel.*

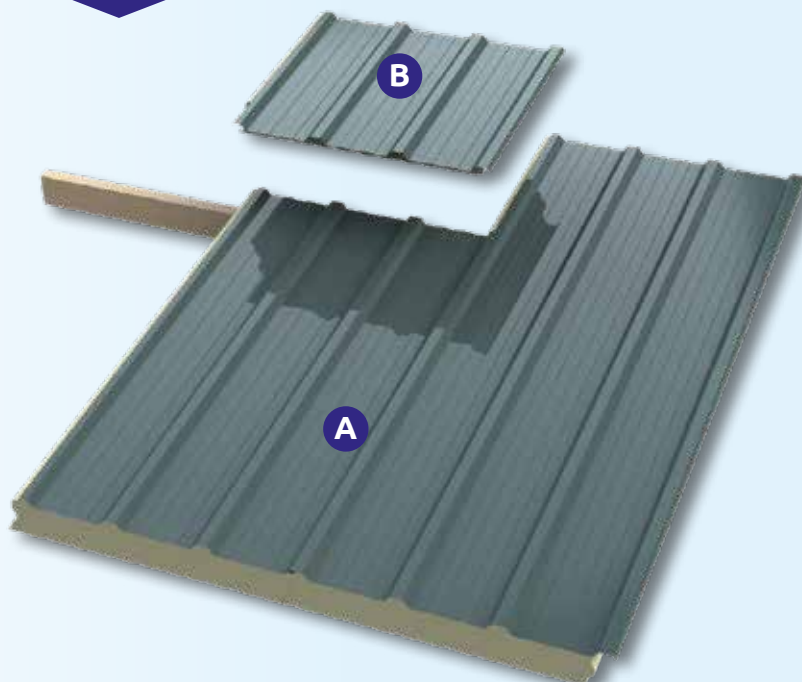
#### Existing roof



Full sandwich panel,  
from gutter to the ridge board.

#### New constructed roof

- A** Sandwich panel - plate to purlin
- B** Sandwich panel - plate of Solatube top to ridge board.





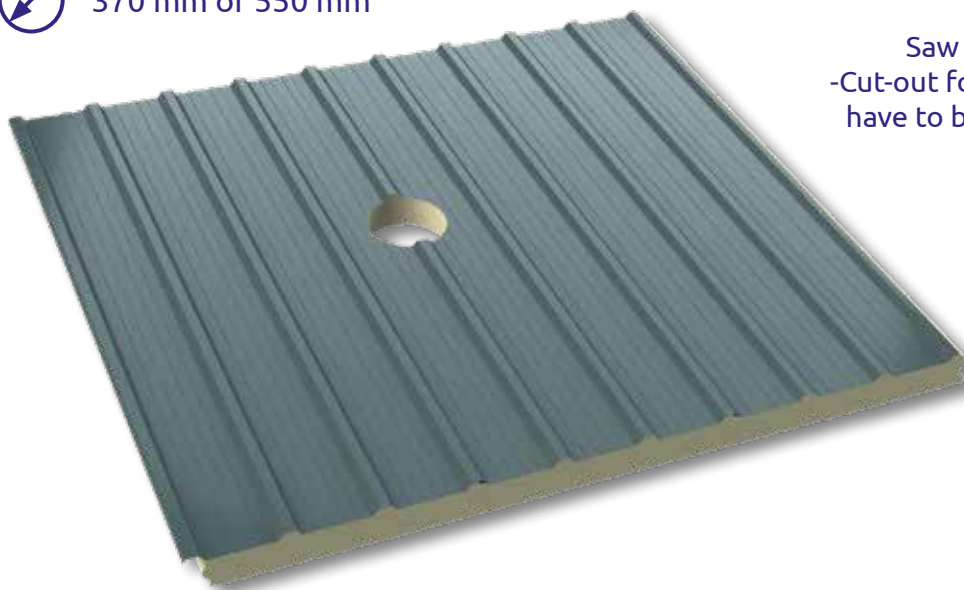
**Profiled  
window**

## Assembly instructions **STEP 2**

### Existing roof



370 mm or 550 mm



Saw a cut-out into the roof sheet:  
-Cut-out for the round Solatube 350/530 mm  
have to be sawn respectively 370/550 mm.

**Never place a Solatube  
on a panel seam!**

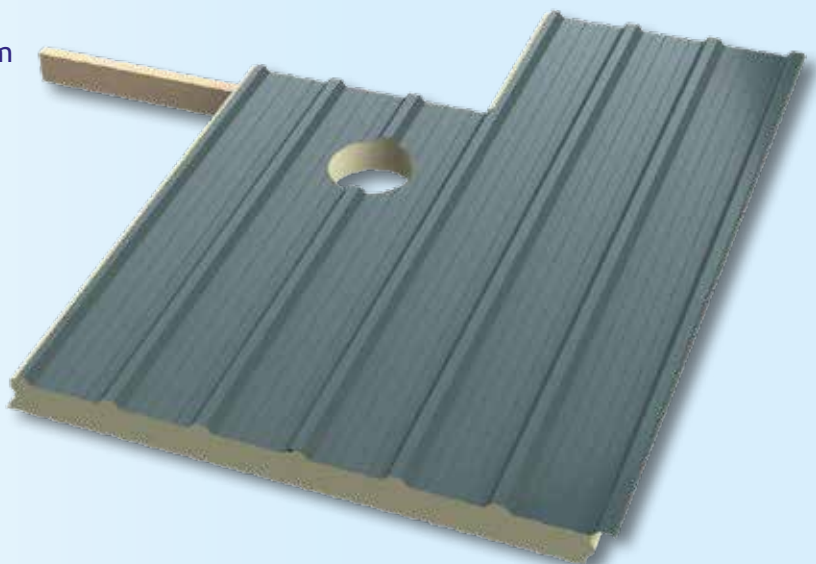
### New constructed roof



370 mm or 550 mm

Saw a cut-out into the roof sheet:  
-Cut-out for the round Solatube 350/530 mm  
have to be sawn respectively 370/550 mm.

**Never place a Solatube  
on a panel seam!**

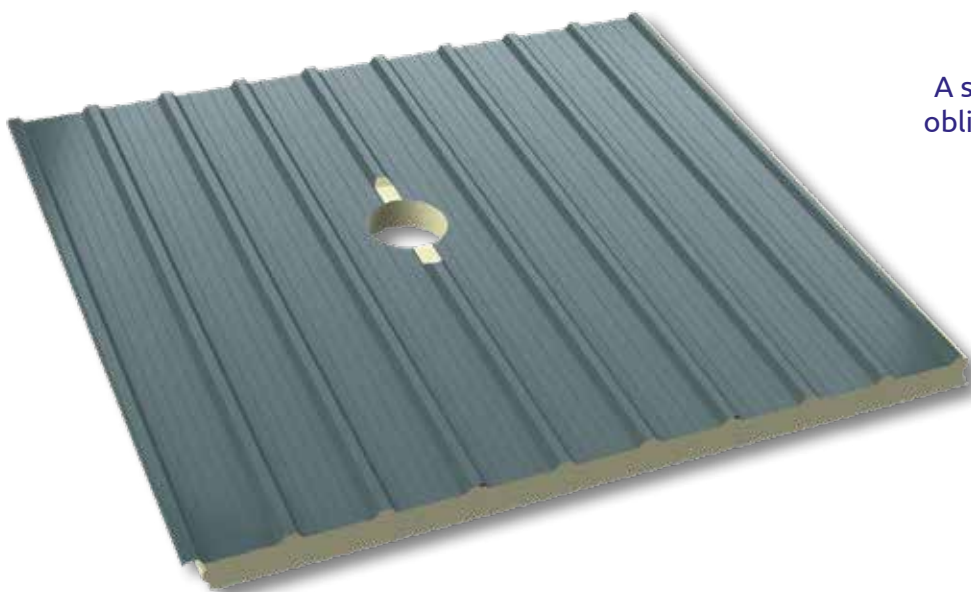




**Profiled  
window**

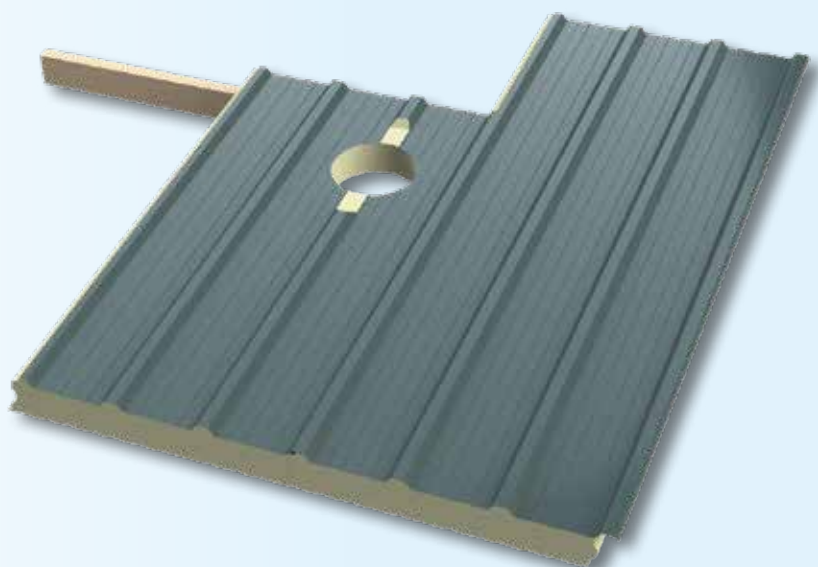
## Assembly instructions **STEP 3**

### Existing roof



A single row of ridges needs an oblique sawing on top and at the bottom of the cut-out.

### New constructed roof



A single row of ridges needs an oblique sawing on top and at the bottom of the cut-out.





**Profiled**  
**window**

## Assembly instructions

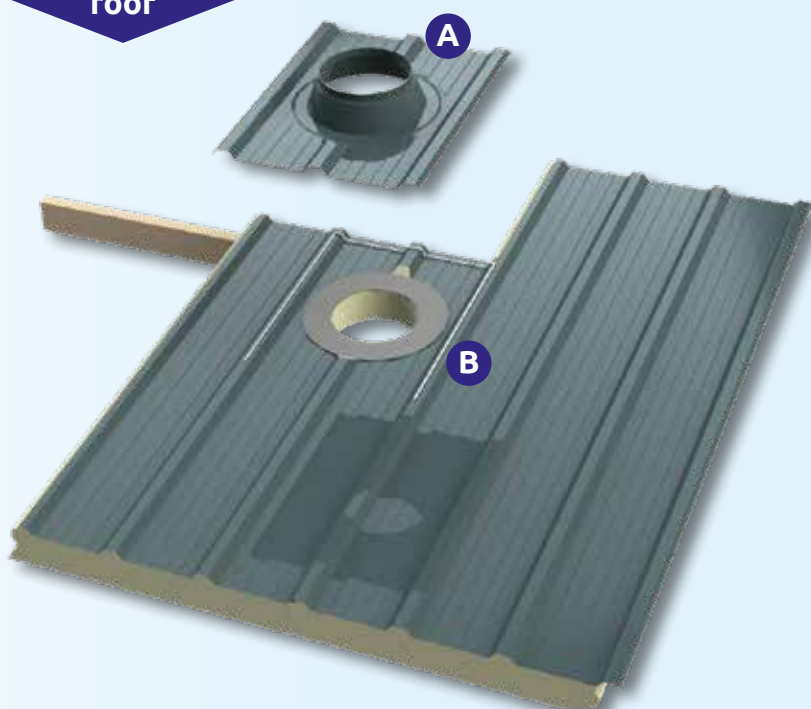
### STEP 4

#### Existing roof



- A** Solatube gutter piece.
- B** Apply high tack mounting kit to both sides and double at the top.

#### New constructed roof



- A** Solatube gutter piece.
- B** Apply high tack mounting kit to both sides and double at the top.



**Profiled  
window**

## Assembly instructions **STEP 5**

### Existing roof



- A** Placed Solatube gutter piece.
- B** Apply a single steel profile sheet over the top of the Solatube gutter piece.

### New constructed roof

- A** Placed Solatube gutter piece.
- B** Place a fitting plate with a cut-back of 200 mm, against the sawed plate at the top of the Solatube gutter piece.



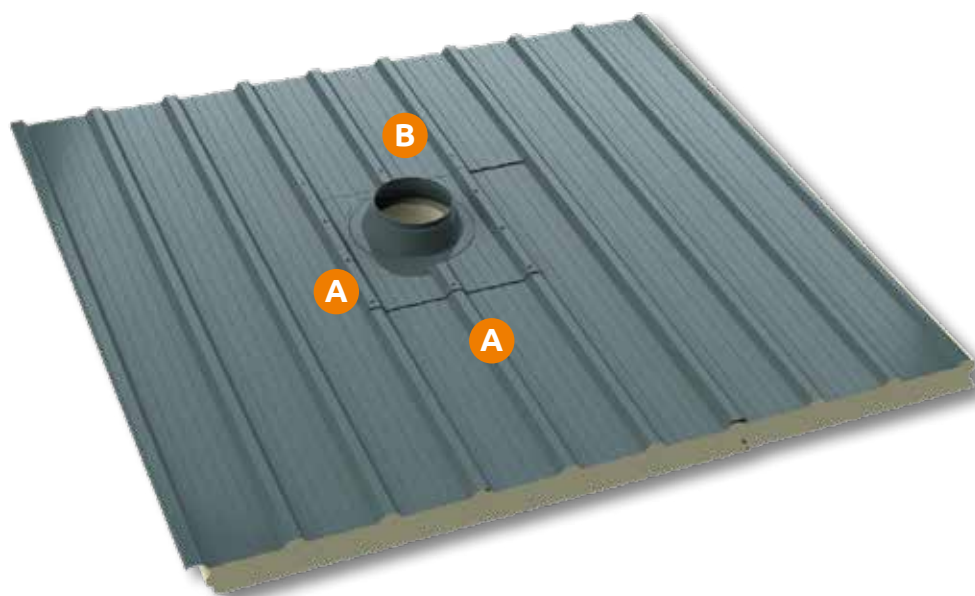


**Profiled**  
**window**

## Assembly instructions

### STEP 6

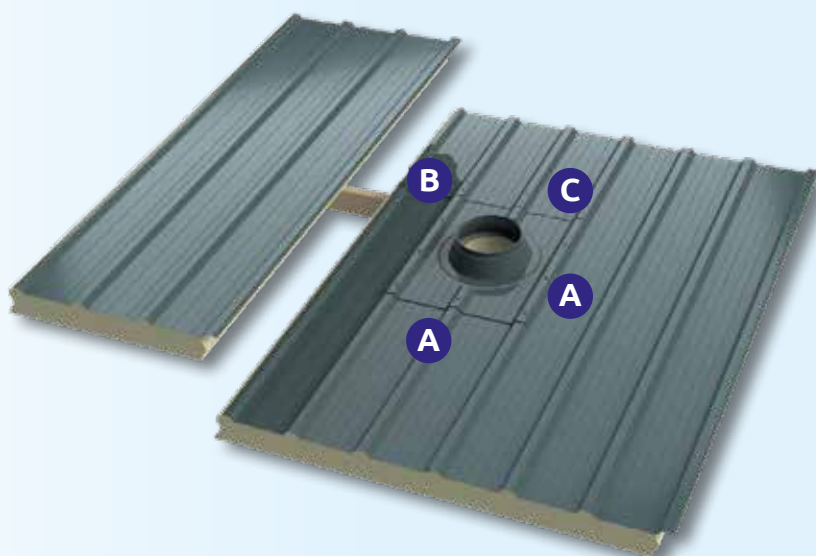
#### Existing roof



- A** Screw Solatube gutter piece onto the side edges and backs, using self-drilling mounting screws with a reduced point.
- B** Screw single steel profile sheet onto every ridge and back, using self-drilling mounting screws with a reduced point.

#### New constructed roof

- A** Screw Solatube gutter piece on the side edges and backs, using self-drilling mounting screws with a reduced point.
- B** Screw the fitting plate on every ridge and back, using self-drilling mounting screws with a reduced point.
- C** Screw the sawed and fitting plate to the purlin, using panel fasteners.





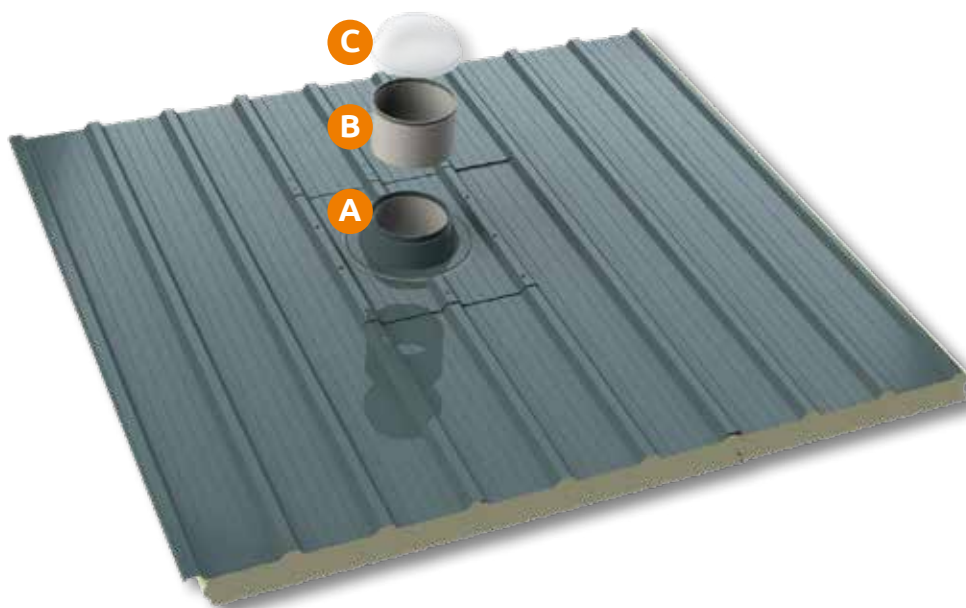
**Profiled**  
**window**

## Assembly instructions

### STEP 7

Existing roof

New constructed  
roof



**A** Assemble Solatube extension tube (bottom) with ceiling ring at the bottom.

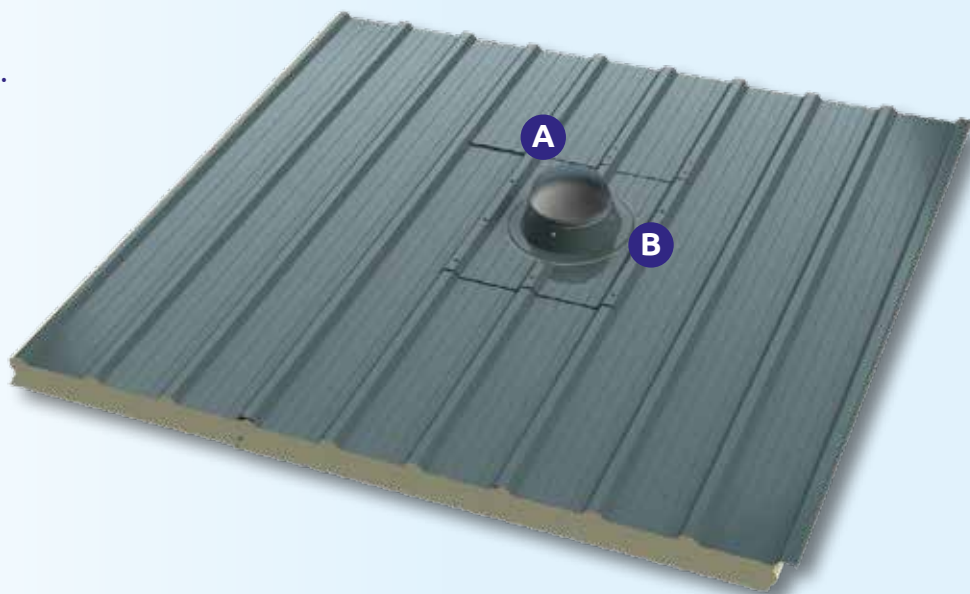
**B** Solatube extension tube (top)

**C** Flex acrylic dome.

**A** Assembled Solatube dome light. Lock the Solatube using the included screws.

**B** Drill a hole into both sides of the upright side. Fill with flexible PUR and close the 4 holes using a 5 mm pop rivet.

Assemble onto the bottom of the lowest extension tube the ceiling ring with bayonet lock.

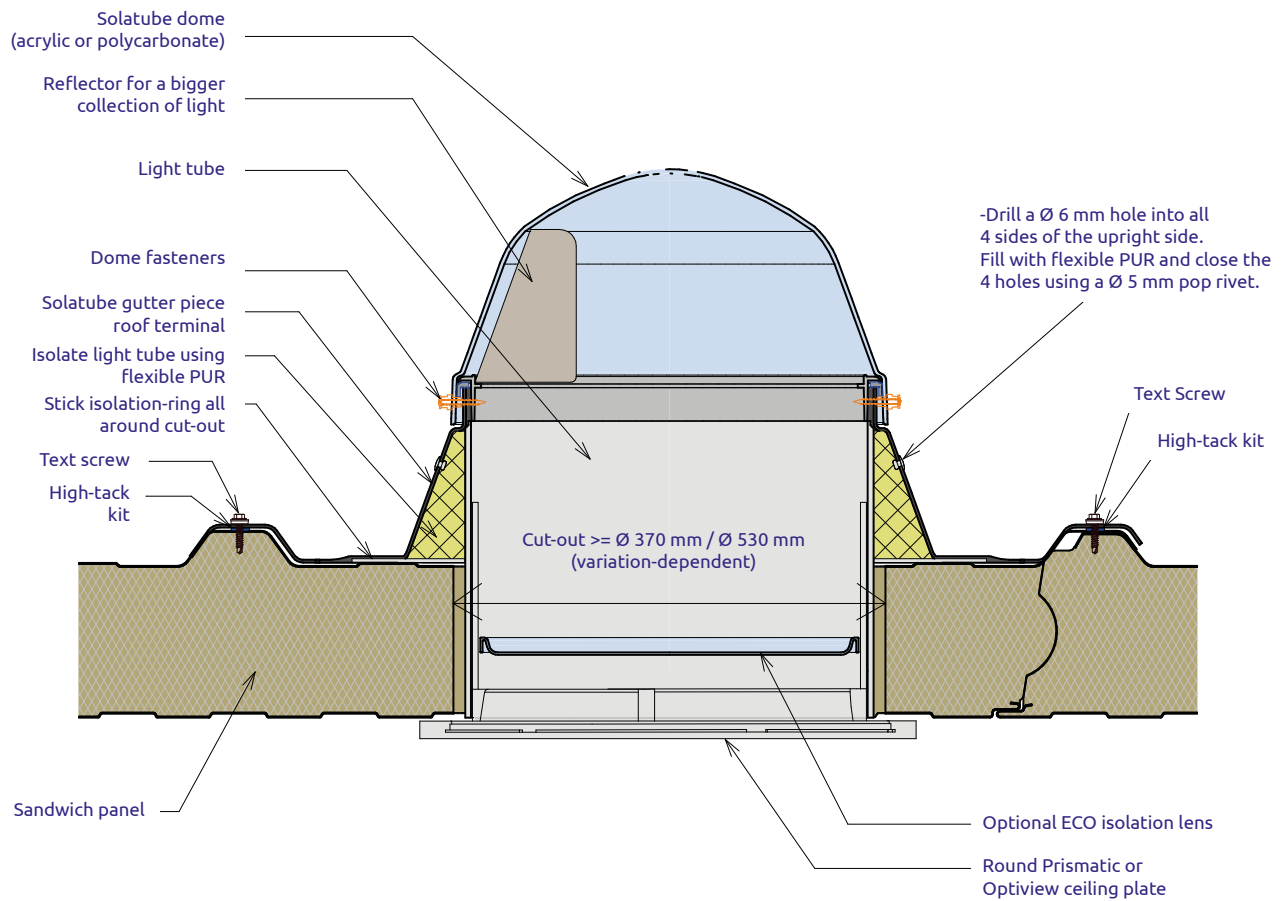






# Profiled window

## Assembly instructions Intersection





# Profiled window

## Assembly instructions Longitudinal section

